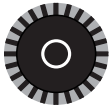
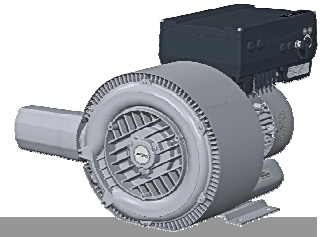
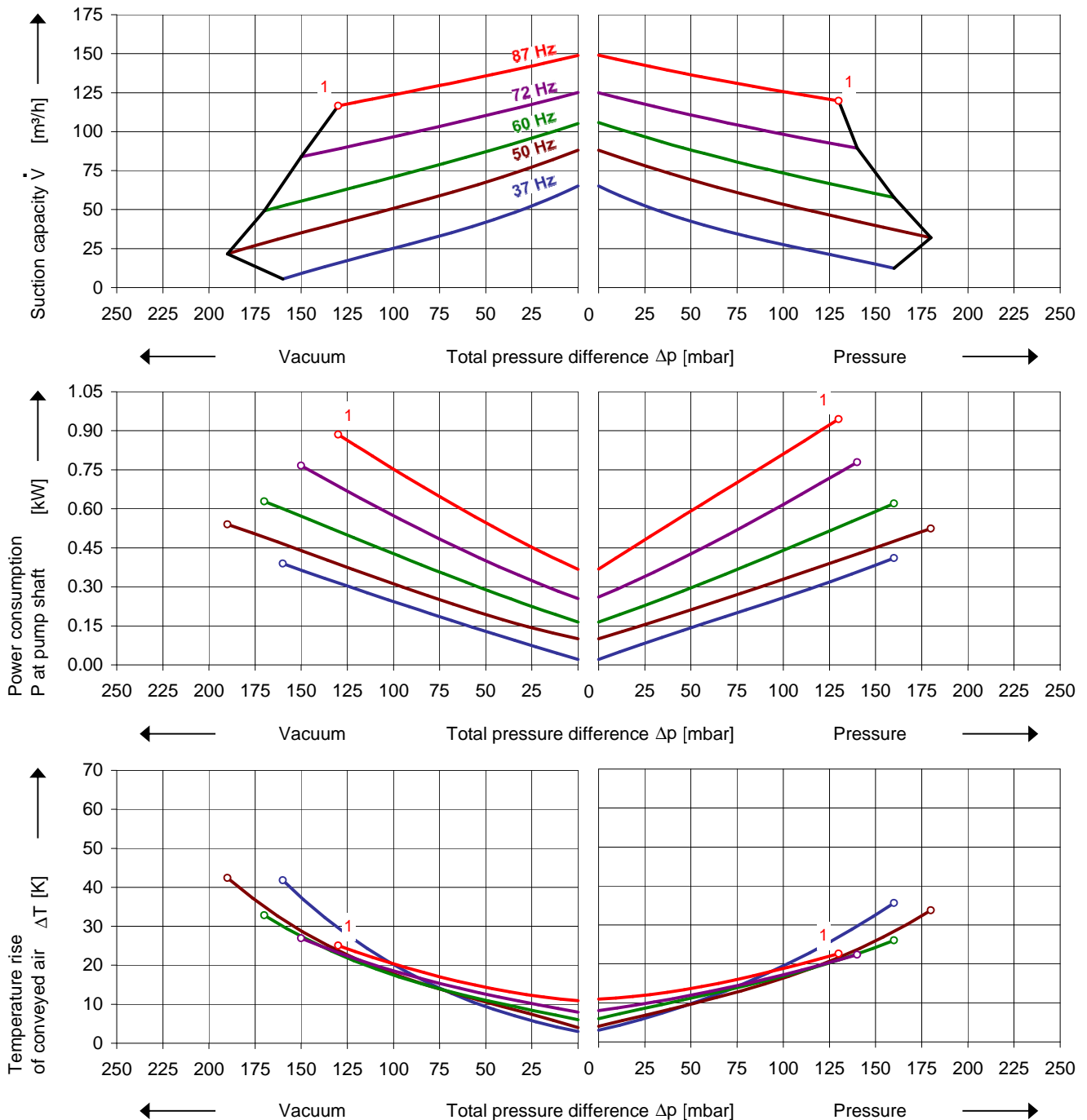


G-BH1 e

Data sheet 2BH1 310

IE2
Side channel blower with Frequency Converter

Performance curves
Vacuum operation
Compressor operation


The performance curves are based on air at a temperature of 15 °C and an atmospheric pressure of 1013 mbar with a tolerance of $\pm 10\%$. The total pressure differences are valid for suction and ambient temperature up to 25 °C. For other conditions please get in touch with us.

The performance curves are based on frequency converter operation and a pulse frequency of 4 kHz minimum. Rated voltage/frequency set point is 345 V / 87 Hz and delta connection of motor. Frequency converters must be connected to a mains voltage of 380 V minimum.

Selection and ordering data

Type 2BH1 310

| No. | Fre- quency | Rated motor | | | Max. differential pressure ¹⁾ | | Sound pressure level ²⁾ | Weight Approx. | Order No. | VFD type |
|--|----------------|-------------|---------|-------|---|----------|---------------------------------------|-------------------|-----------------------------|----------|
| | | Voltage | Current | Power | Vacuum | Pressure | | | | |
| | | Hz | V | A | kW | mbar | | | | |
| Integrated VFD 3~ 400V -15% ... 480V +10%, 50/60 Hz ±6% with IE2 motor with thermistor (PTC), IP55 | | | | | | | | | | |
| 1 | 87 | 345 Δ | 2.9 Δ | 0.95 | -130 | 130 | 66 | 20 | 2BH1310-7H221 | A |
| 3~ 50/60 Hz, IP55, Insulation material class F, UL 507 and CSA 22.2 No 113 (certificate number E225239) | | | | | | | | | | |
| 1 | 50 | 345 Y | 1.7 Y | 0.6 | -190 | 180 | 55 | 15 | 2BH1310-7HP21 ³⁾ | A |
| | 60 | 400 Y | 1.7 Y | 0.63 | -170 | 160 | 61 | | | A |
| | 87 | 345 Δ | 2.9 Δ | 0.95 | -130 | 130 | 66 | | | A |

- 1) We recommend differential pressure indicators / switches for limiting differential pressure. Relief valves are only useable at defined frequency.
- 2) Measuring surface sound pressure level acc. to EN ISO 3744, measured with an equivalent unit at a distance of 1 m. The pump is throttled to an average suction pressure, with piping connected, but no relief valves fitted, tolerance ±3 dB (A).
- 3) PTC recommended for motor overload protection. Ordering example: 2BH1310-□□□□-Z Z=A11

All G-BH match the 2006/42/EC (machinery) and 2006/95/EC (low voltage) directives and the EN 60034-1 norm "Rotating electrical machines".
The motors comply with EN 60 034-1 / -2 / -30 (IEC 60034) and thermal class F.

Frequency converter (IP55) motor integrated / for wall mounting

| Frequency Converter | Rated mains voltage | Max. motor current | Typical motor power | Rated mains current | Fuse Protection | Weight Approx. | Adaptor for wall mounting | |
|---------------------|------------------------|-----------------------------------|------------------------|------------------------|-----------------|-------------------|------------------------------|--------------|
| | | | | | | | Order No. | |
| A | 2FC4152-1 □□ 00 | 400V (-15%) ... 480V (+10%) | 4.0 | 1.5 | 3.3 | 10 | 3.9 | 2FX16190ER00 |

| I/O's and automation | Order option | Example: |
|--|--------------|---|
| ST 2 AIN / 2 AOUT / 4 DIGIN / 1 DIGOUT / 2 RELAYS | STANDARD | 2BH1310-7H221-Z Z=U51 VFD type 2FC4152-1PB00 to be delivered already installed |
| PB 2 AIN / 2 AOUT / 4 DIGIN / 1 DIGOUT / 2 RELAYS / ProfiBus interface | Z = U51 | |
| CB 2 AIN / 2 AOUT / 4 DIGIN / 1 DIGOUT / 2 RELAYS / CANopen interface | Z = U52 | |
| PN 2 AIN / 2 AOUT / 4 DIGIN / 1 DIGOUT / 2 RELAYS / ProfiNet interface | Z = U53 | |
| SC 2 AIN / 2 AOUT / 4 DIGIN / 1 DIGOUT / 2 RELAYS / SERCOS3 interface | Z = U54 | |

VFD accessories

| Item | Order No. | Item | Order No. |
|--|---------------|---|---------------|
| Manual control | | Differential pressure transmitters | |
| MMI handheld | 2FX4520-0ER00 | Vacuum -1000 ... 0 mbar | 2FX6022-0BD00 |
| USB adaptor cable | 2FX4521-0ER00 | Pressure 0 ... 600 mbar | 2FX6013-0BD00 |
| | | 0 ... 1000 mbar | 2FX6014-0BD00 |
| INVERTERpc Software | | | |
| Free download at www.gd-elmorietschle.com >Downloads >Product Documents >Accessories | | | |

Changes in particular of the quoted performance curve, data and weights may occur without prior notice. The data given do not constitute an obligation from our side to deliver as shown.

Elmo Rietschle is a brand of Gardner Denver

**Gardner
Denver**

Your Ultimate Source for Vacuum and Pressure

Gardner Denver Deutschland GmbH

Industriestraße 26
97616 Bad Neustadt - Germany
Tel.: +49 9771 6888-0
Fax: +49 9771 6888-4000

www.gd-elmorietschle.com • er.de@gardnerdenver.com

Gardner Denver Schopfheim GmbH

Roggenbachstraße 58
79650 Schopfheim - Germany
Tel.: +49 7622 392-0
Fax: +49 7622 392-300