

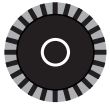
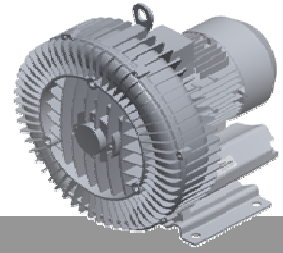


Elmo Rietschle

G-BH1

Data sheet 2BH1 500

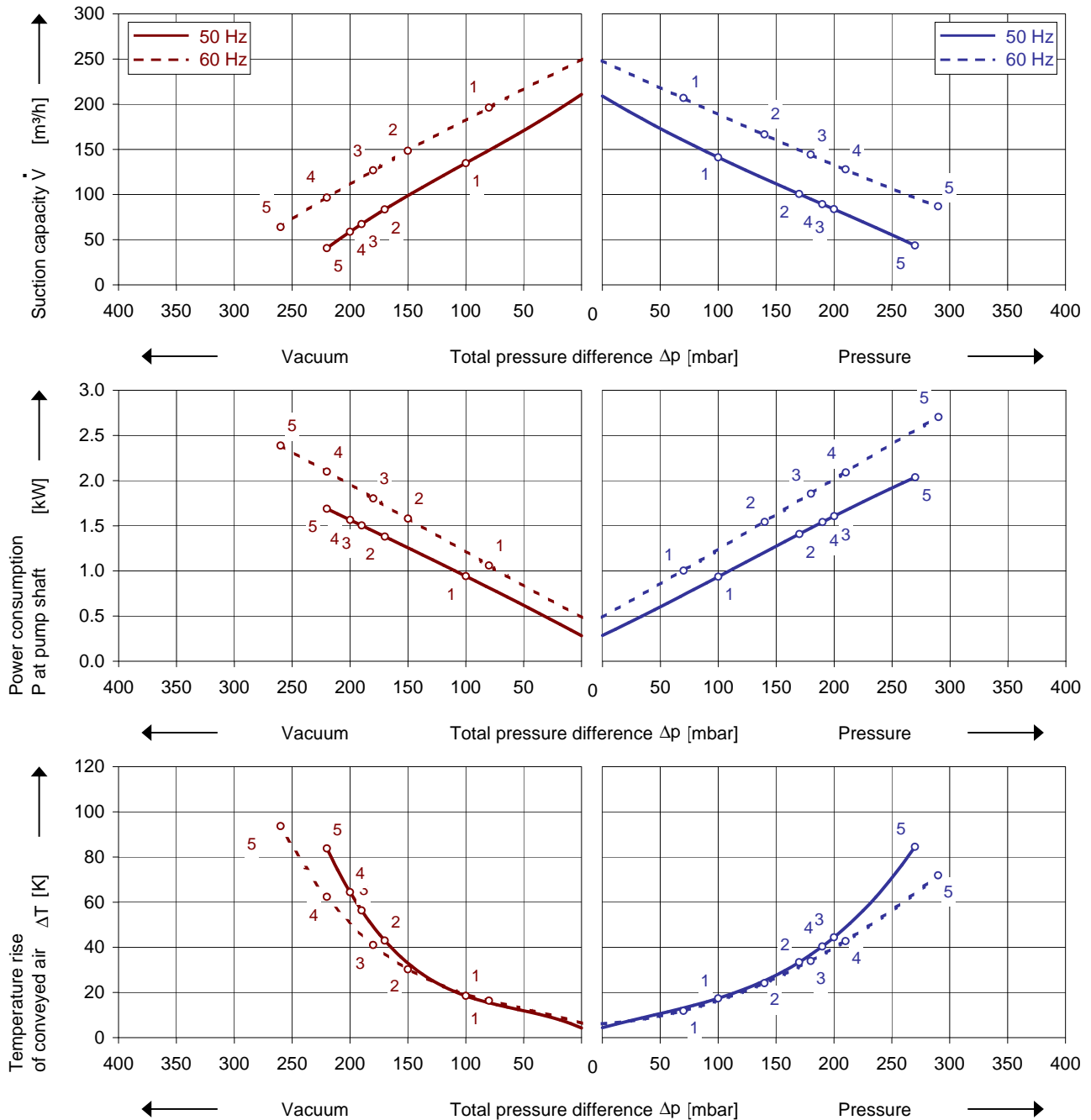
Side channel blower



Performance curves

Vacuum operation

Compressor operation



The performance curves are based on air at a temperature of 15 °C and an atmospheric pressure of 1013 mbar with a tolerance of $\pm 10\%$. The total pressure differences are valid for suction and ambient temperature up to 25 °C. For other conditions please get in touch with us.

Every G-BH pump can be used both as vacuum pump and compressor in continuous operation over the total performance curve range. The motors are available as standard in protection category IP 55 and insulation class F. The vacuum pumps / compressors are UL and CSA approved.

Selection and ordering data

Type 2BH1 500

No.	Frequency	Rated			Max. differential pressure ²⁾		Sound pressure level ³⁾	Weight Approx.	Order No.
		Voltage ¹⁾	Current	Power	Vacuum	Pressure			
	Hz	V	A	kW	mbar		dB(A)	kg	
3~ 50/60 Hz, IP55, Insulation material class F, UL 507 and CSA 22.2 No 113 (certificate number E225239)									
1	50	200-240 Δ / 345-415 Y	4.2 Δ / 2.4 Y	0.85	-100	100	64	20	2BH1500-7AH06
	60	220-275 Δ / 380-480 Y	4.0 Δ / 2.3 Y	0.95	-80	70	70		
2	50	200-240 Δ / 345-415 Y	5.7 Δ / 3.3 Y	1.3	-170	170	64	22	2BH1500-7AH16
	60	220-275 Δ / 380-480 Y	5.7 Δ / 3.3 Y	1.5	-150	140	70		
4	50	200-240 Δ / 345-415 Y	7.5 Δ / 4.3 Y	1.6	-200	190	64	23	2BH1500-7AH26
	60	220-275 Δ / 380-480 Y	7.6 Δ / 4.4 Y	2.1	-220	210	70		
5	50	200-240 Δ / 345-415 Y	9.7 Δ / 5.6 Y	2.2	-220	270	64	25	2BH1500-7AH36
	60	220-275 Δ / 380-480 Y	10.3 Δ / 6 Y	2.6	-260	290	70		
3~ 50/60 Hz, IP55, Insulation material class F, UL 507 and CSA 22.2 No 113 (certificate number E225239)									
1	50	500 Y	1.92 Y	0.85	-100	100	64	20	2BH1500-7AC03
	60	575 Y	1.95 Y	0.95	-80	70	70		
2	50	500 Y	2.65 Y	1.3	-170	170	64	22	2BH1500-7AC13
	60	575 Y	2.6 Y	1.5	-150	140	70		
4	50	500 Y	2.9 Y	1.5	-200	190	64	23	2BH1500-7AC23
	60	575 Y	2.95 Y	1.75	-220	210	70		
5	50	500 Y	4.5 Y	2.2	-220	270	64	25	2BH1500-7AC33
	60	575 Y	4.55 Y	2.6	-260	290	70		
1~ 50/60 Hz, IP55, Insulation material class F, UL 507 and CSA 22.2 No 113 (certificate number E225239), with attached capacitor for cont. operation									
3	50	115 / 230	22.0 / 11.0	1.5	-190	200	64	26	2BH1500-7AV35
	60	115 / 230	24.0 / 12.0	1.75	-180	180	70		

1) In case of frequency converter operation the standard motor insulation system is suitable for converter input voltages up to 460 V.

2) Relief valves available for limiting differential pressure.

3) Measuring surface sound pressure level acc. to EN ISO 3744, measured with an equivalent unit at a distance of 1 m. The pump is throttled to an average suction pressure, with piping connected, but no relief valves fitted, tolerance ±3 dB (A).


All G-BH match the 2006/42/EC (machinery) and 2006/95/EC (low voltage) directives and the EN 60034-1 norm "Rotating electrical machines".

The motors comply with EN 60 034-1 / -2 / -30 (IEC 60034) and thermal class F.

For three phase motors tolerances are +/-10% for fixed voltage motors and +/-5% for voltage range motors. Single phase machines are designed with a +/- 5% tolerance.

The frequency tolerance is +/- 2 % maximum.

Motors for other mains

Voltage range		Fixed voltage		VFD	c 				
50 Hz	60 Hz	50 Hz	60 Hz	87 Hz	60 Hz		2BH1500-7. □ . □		
					Δ	Y			
3~									
185 - 225 V Δ / 320 - 390 V Y	200 - 240 V Δ / 345 - 415 V Y			380 V Δ	•	•	H	1	
200 - 240 V Δ / 345 - 415 V Y	220 - 275 V Δ / 380 - 480 V Y				•	•			H
345 - 415 V Δ / 600 - 720 V Y	380 - 480 V Δ / 660 - 720 V Y				•	•	H	7	
		500 V Y	575 V Y		•	•	C	3	
		500 V Δ	575 V Δ		•	•	C	5	
3~									
IE2 3~ ⁵⁾									
180 - 240 V Δ / 310 - 415 V Y	200 - 275 V Δ / 345 - 480 V Y	200 V Δ / 345 V Y	230 V Δ / 400 V Y	400 V Δ	•	•	P	1	
450 - 550 V Δ	520 - 600 V Δ	500 V Y	575 V Y		•	•			P
200 - 260 V Δ / 350 - 450 V Y	230 - 290 V Δ / 400 - 500 V Y	500 V Δ	575 V Δ		•	•	P	5	
350 - 450 V Δ / 610 - 725 V Y	400 - 500 V Δ / 690 - 725 V Y	230 V Δ / 400 V Y	265 V Δ / 460 V Y		•	•	P	6	
		400 V Δ / 690 V Y	460 V Δ		•	•	P	7	

5) Performance can differ if IE2 motors are used. Please refer to corresponding data sheets.

Changes in particular of the quoted performance curve, data and weights may occur without prior notice. The data given do not constitute an obligation from our side to deliver as shown.

Elmo Rietschle is a brand of Gardner Denver

**Gardner
Denver**

Your Ultimate Source for Vacuum and Pressure

Gardner Denver Deutschland GmbH

Industriestraße 26
97616 Bad Neustadt - Germany

Tel.: +49 9771 6888-0
Fax: +49 9771 6888-4000

www.gd-elmoietschle.com • er.de@gardnerdenver.com

Gardner Denver Schopfheim GmbH

Roggenbachstraße 58
79650 Schopfheim - Germany

Tel.: +49 7622 392-0
Fax: +49 7622 392-300