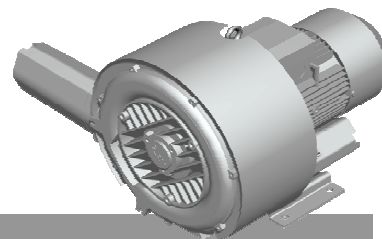


G-BH1

Data sheet 2BH1 510

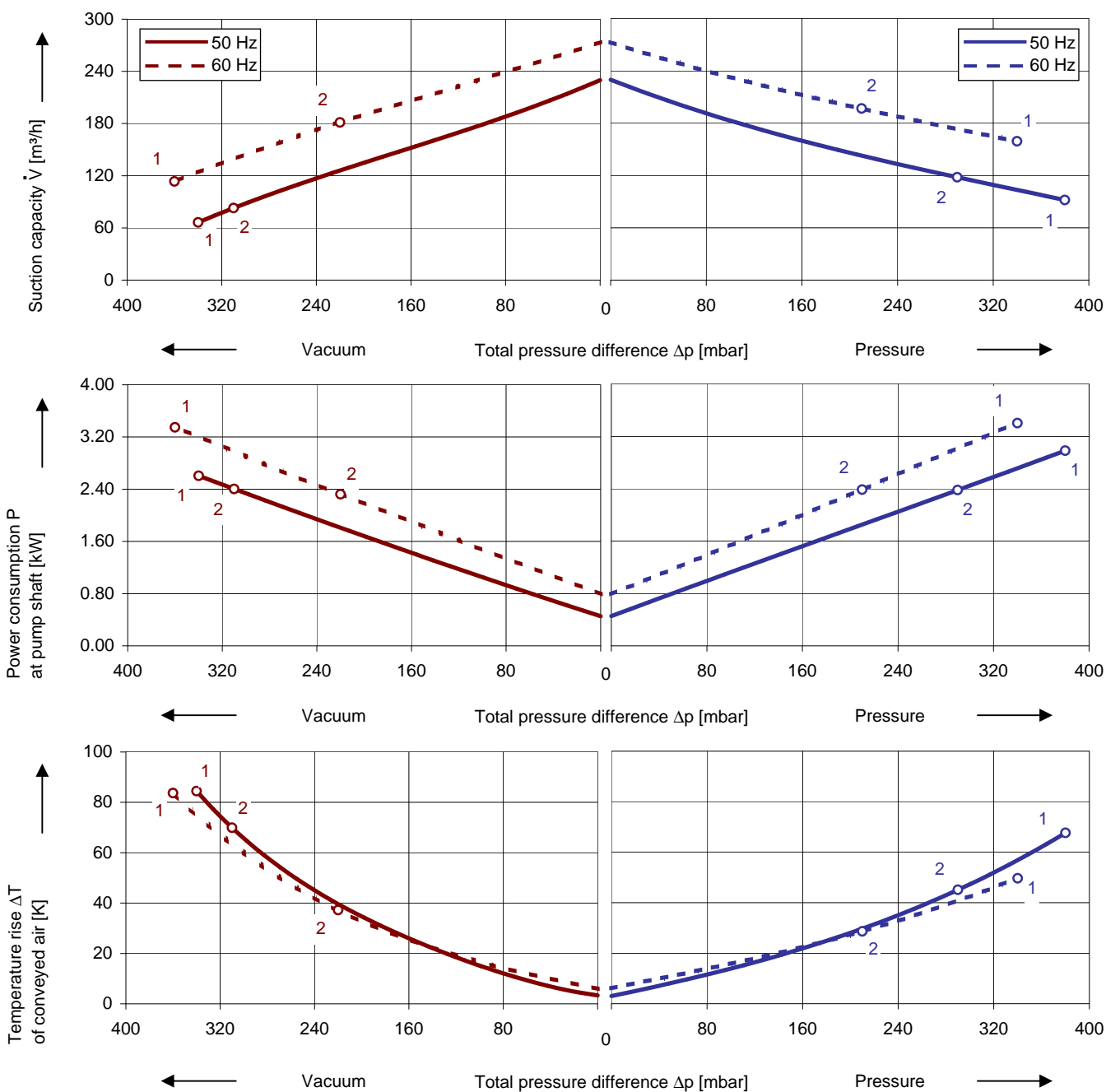
Side channel blower in ATEX configuration



Performance curves

Vacuum operation

Compressor operation



The performance curves are based on air at a temperature of 15 °C and an atmospheric pressure of 1013 mbar with a tolerance of $\pm 10\%$. The total pressure differences are valid for suction and ambient temperature up to 25 °C. For other conditions please get in touch with us.

Every G-BH pump can be used both as vacuum pump and compressor in continuous operation over the total performance curve range. Blowers with ATEX 94/9 EG are available for categories 3D, 3G and 3/2D as fixed voltage machines for 50 and 60 Hz. For category 3/2G 50 Hz or 60 Hz versions only are available.

Selection and ordering data

Type 2BH1 510

No.	Frequency	Rated			Max. differential pressure		Sound pressure level ²⁾	Weight Approx.	Degree of protection	ATEX category	Order No.
		Voltage ¹⁾	Current	Power	Vacuum	Pressure					
	Hz	V	A	kW	mbar		dB(A)	kg			
3- 50/60 Hz, Insulation material class F, Temperature class T3											3D, 3G, 3/2D
1	50	230 Δ / 400 Y	10.6 Δ / 6.0 Y	3	-340	380	72	40	IP65	3/2D ³⁾	2BH1510-7HD41-Z Z=M34
	60	460 Y	5.9 Y	3.45	-360	340	74		IP55	3D ³⁾	2BH1510-7HD41-Z Z=M35
									IP55	3G ³⁾	2BH1510-7HD41-Z Z=M72
3- 50 Hz oder 3- 60 Hz, Insulation material class F, Temperature class T3											3/2G
2	50	230 Δ / 400 Y	9.2 Δ / 5.3 Y	2.5	-310	290	72	40	IP55	3/2G ³⁾	2BH1510-7HD41-Z Z=M71
	60	460 Y	4.6 Y	2.5	-220	210	74		IP55	3/2G ³⁾	2BH1510-7HG41-Z Z=M71

- 1) In case of frequency converter operation the standard motor insulation system is suitable for converter input voltages up to 460 V.
- 2) Measuring surface sound pressure level acc. to EN ISO 3744, measured with an equivalent unit at a distance of 1 m. The pump is throttled to an average suction pressure, with piping connected, but no relief valves fitted, tolerance ±3 dB (A).
- 3) The abbreviations „D“ and „G“ used include the subcategories (i) for „inside“ and (o) for „outside“. Examples:
 3D includes 3D(i) and 3D(o),
 3/2D includes 3D(i) and 2D(o),
 3/2G includes 3G(i) and 2G(o)

All G-BH fulfil the 2006/42/EC (machinery) and 2006/95/EC (low voltage) directives and the EN 60034-1 norm "Rotating electrical machines".

The motors comply with EN 60 034-1 / -2 / -30 (IEC 60034) and thermal class F.
 The voltage tolerance is +/-10%. The frequency tolerance is +/- 2 % maximum.

Other voltages

ATEX Category	50 Hz	60 Hz	2BH1...-7.	□	.	□	-Z	Z=
3-								
3/2D, 3D, 3G	230 V Δ / 400 V Y	460 V Y		D	1			M34, M35, M72
	400 V Δ / 690 V Y	460 V Δ		D	6			
	500 V Δ	575 V Δ		D	5			
3/2G	230 V Δ / 400 V Y	-		D	1			M71
	400 V Δ / 690 V Y	-		D	6			
	500 V Δ	-		D	5			
	-	460 V Y		G	1			
	-	460 V Δ		G	6			
	-	575 V Δ		G	5			

Changes in particular of the quoted performance curve, data and weights may occur without prior notice. The data given do not constitute an obligation from our side to deliver as shown.

Gardner Denver

Elmo Rietschle is a brand of Gardner
 Denver's Industrial Products Group
 and part of Blower Operations

er.de@gardnerdenver.com
 www.gd-elmorietschle.com

Gardner Denver Deutschland GmbH

Industriestraße 26
 97616 Bad Neustadt - Germany

Tel.: +49 9771 6888-0
 Fax: +49 9771 6888-4000

Gardner Denver Schopfheim GmbH

Roggenbachstraße 58
 79650 Schopfheim - Germany

Tel.: +49 7622 392-0
 Fax: +49 7622 392-300