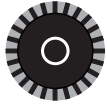
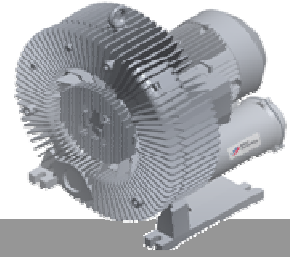


G-BH1

Data sheet 2BH1 800 HT

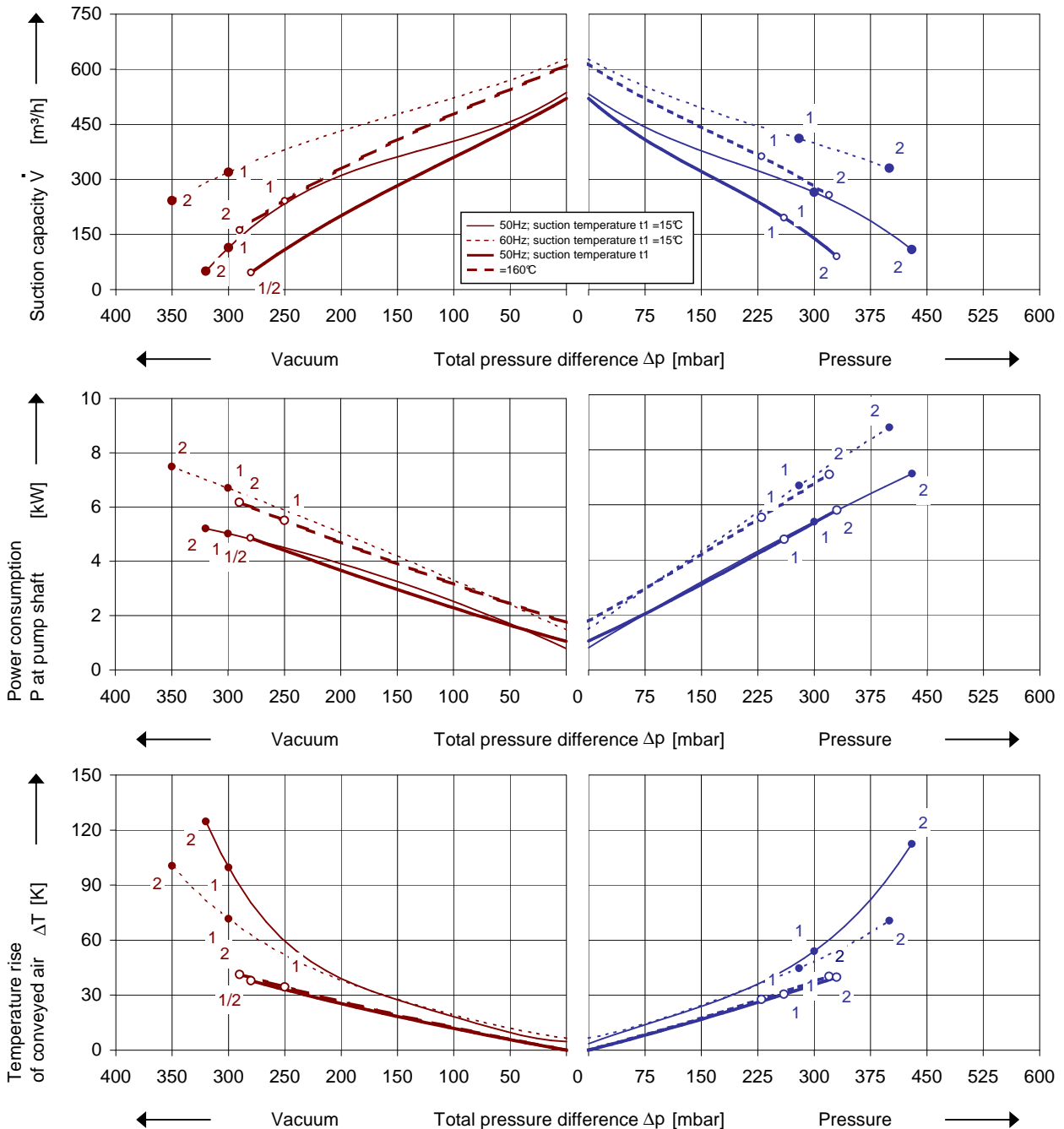
High temperature side channel blower



Performance curves

Vacuum operation

Compressor operation



The performance curves are based on air at a temperature of 15 °C / 160 °C and an atmospheric pressure of 1013 mbar with a tolerance of $\pm 10\%$. The total pressure differences are valid for suction and ambient temperature up to 40 °C. For other conditions please get in touch with us.

Every G-BH pump can be used both as vacuum pump and compressor in continuous operation over the total performance curve range. The motors are available as standard in protection category IP 55 and insulation class F.

Selection and ordering data

Type 2BH1 800									
No.	Fre- quency	Rated			Max. differential pressure ²⁾		Sound pressure level ³⁾	Weight Approx. kg	Order No.
		Voltage ¹⁾	Current	Power	Vacuum	Pressure			
		Hz	V	A	kW	mbar			
3~ 50/60 Hz, IP55, Insulation material class F, UL 507 and CSA 22.2 No 113 (certificate number E225239)									
1	50	345-415 Δ / 600-720 Y	12.0 Δ / 6.9 Y	4.8	-280	260	70	137	2BH1800-6AH17
	60	380-480 Δ / 660-720 Y	11.7 Δ / 6.8 Y	5.5	-250	230	74		
2	50	345-415 Δ / 600-720 Y	15.0 Δ / 8.7 Y	6.5	-280	330	70	143	2BH1800-6AH27
	60	380-480 Δ / 660-720 Y	14.3 Δ / 8.3 Y	7.4	-290	320	74		
3~ 50/60 Hz, IP55, Insulation material class F, UL 507 and CSA 22.2 No 113 (certificate number E225239)									
1	50	500 Δ	9.2 Δ	4.8	-280	260	70	137	2BH1800-6AC15
	60	575 Δ	8.7 Δ	5.5	-250	230	74		
2	50	500 Δ	11.4 Δ	6.5	-280	330	70	143	2BH1800-6AC25
	60	575 Δ	10.7 Δ	7.4	-290	320	74		

1) In case of frequency converter operation the standard motor insulation system is suitable for converter input voltages up to 460 V.

2) Relief valves available for limiting differential pressure.

3) Measuring surface sound pressure level acc. to EN ISO 3744, measured with an equivalent unit at a distance of 1 m. The pump is throttled to an average suction pressure, with piping connected, but no relief valves fitted, tolerance ±3 dB (A).


All G-BH match the 2006/42/EC (machinery) and 2006/95/EC (low voltage) directives and the EN 60034-1 norm "Rotating electrical machines".

The motors comply with EN 60 034-1 / -2 / -30 (IEC 60034) and thermal class F.

For three phase motors tolerances are +/-10% for fixed voltage motors and +/-5% for voltage range motors. Single phase machines are designed with a +/- 5% tolerance.

The frequency tolerance is +/- 2 % maximum.

Motor for alternate voltages

Voltage range		Fixed voltage		VFD			
50 Hz	60 Hz	50 Hz	60 Hz	87 Hz	60 Hz	2BH1800-6. □ . □	
					Δ	Y	
3~							
185 - 225 V Δ / 320 - 390 V Y	200 - 240 V Δ / 345 - 415 V Y				•	•	H 1
200 - 240 V Δ / 345 - 415 V Y	220 - 275 V Δ / 380 - 480 V Y			380 V Δ	•	•	H 6
345 - 415 V Δ / 600 - 720 V Y	380 - 480 V Δ / 660 - 720 V Y				•	•	H 7
		500 V Y	575 V Y		•	•	C 3
		500 V Δ	575 V Δ		•	•	C 5

Changes in particular of the quoted performance curve, data and weights may occur without prior notice. The data given do not constitute an obligation from our side to deliver as shown.

Elmo Rietschle is a brand of Gardner Denver

**Gardner
Denver**

Your Ultimate Source for Vacuum and Pressure

Gardner Denver Deutschland GmbH

Industriestraße 26
97616 Bad Neustadt - Germany
Tel.: +49 9771 6888-0
Fax: +49 9771 6888-4000

www.gd-elmorietschle.com • er.de@gardnerdenver.com

Gardner Denver Schopfheim GmbH

Roggenbachstraße 58
79650 Schopfheim - Germany
Tel.: +49 7622 392-0
Fax: +49 7622 392-300