

G-BH1

Data sheet 2BH1 810

Side channel blower with IE2-motors

IE2

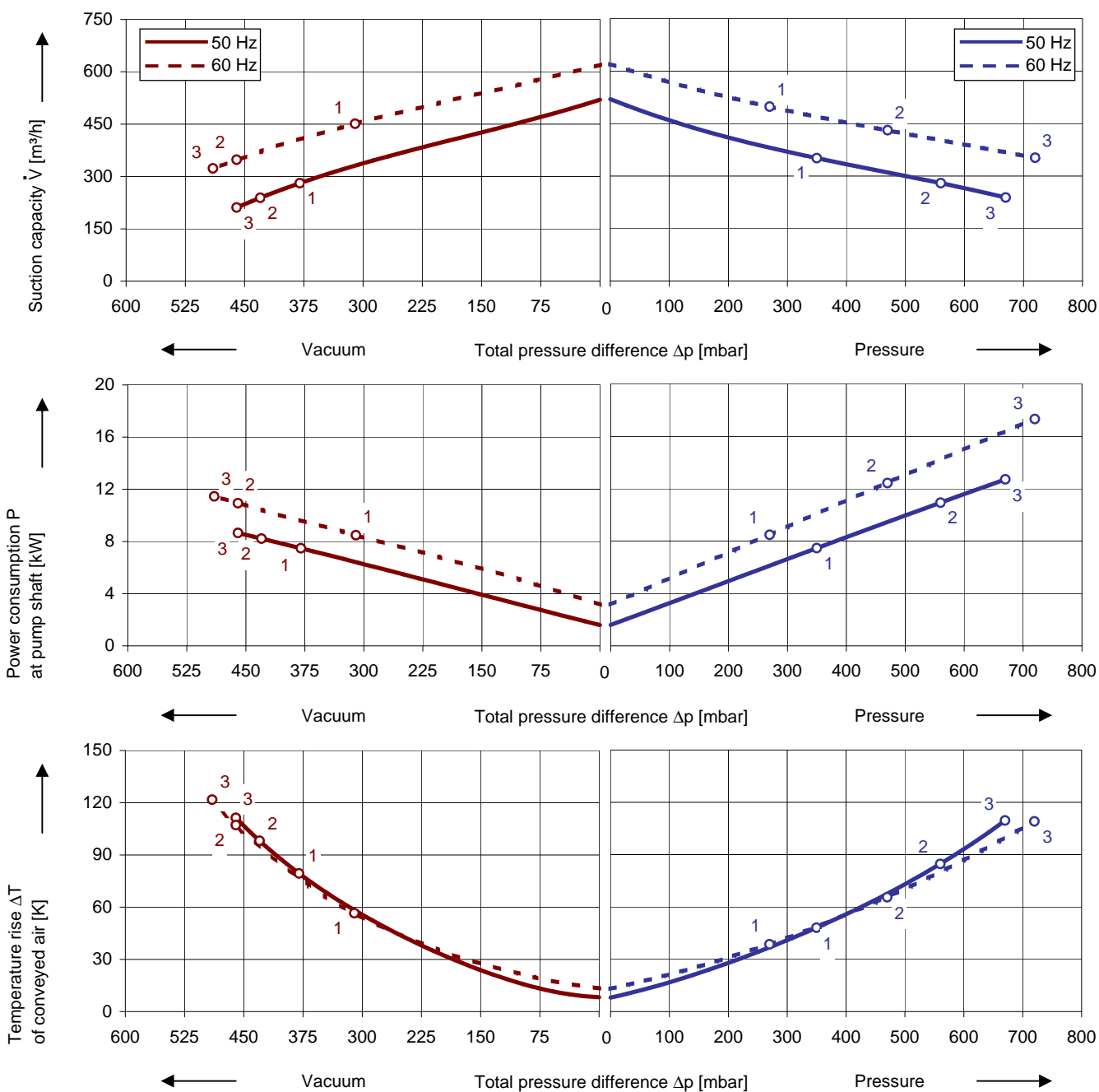
CEC  **US**



Performance curves

Vacuum operation

Compressor operation



The performance curves are based on air at a temperature of 15 °C and an atmospheric pressure of 1013 mbar with a tolerance of ± 10 %. The total pressure differences are valid for suction and ambient temperature up to 25 °C. For other conditions please get in touch with us.

Every G-BH pump can be used both as vacuum pump and compressor in continuous operation over the total performance curve range. The motors are available as standard in protection category IP 55 and insulation class F. The vacuum pumps / compressors are UL and CSA approved.

Selection and ordering data

Type 2BH1 810

No.	Fre- quency	Rated			Max. differential pressure ²⁾		Sound pressure level ³⁾	Weight Approx.	Order No.
		Voltage ¹⁾	Current	Power	Vacuum	Pressure			
					Hz	V			
IE2 3~ 50/60 Hz, IP55, Insulation material class F, UL 507 and CSA 22.2 No 113 (certificate number E225239)									
1	50	400 Δ / 690 Y	13.4 Δ / 7.7 Y	7.50	-380	350	74	169	2BH1810-7HP27
	60	460 Δ	13.0 Δ	8.60	-310	270	78		
2	50	400 Δ / 690 Y	19.8 Δ / 11.4 Y	11.0	-430	560	74	205	2BH1810-7HP37
	60	460 Δ	19.0 Δ	12.6	-460	470	78		
3	50	400 Δ / 690 Y	26.5 Δ / 15.4 Y	15.0	-460	670	74	221	2BH1810-7HP47
	60	460 Δ	26.0 Δ	17.3	-490	720	78		
IE2 3~ 50/60 Hz, IP55, Insulation material class F, UL 507 and CSA 22.2 No 113 (certificate number E225239)									
1	50	500 Δ	10.6 Δ	7.50	-380	350	74	169	2BH1810-7HP25
	60	575 Δ	10.4 Δ	8.60	-310	270	78		
2	50	500 Δ	15.8 Δ	11.0	-430	560	74	205	2BH1810-7HP35
	60	575 Δ	15.2 Δ	12.6	-460	470	78		
3	50	500 Δ	21.5 Δ	15.0	-460	670	74	221	2BH1810-7HP45
	60	575 Δ	20.5 Δ	17.3	-490	720	78		

1) In case of frequency converter operation the standard motor insulation system is suitable for converter input voltages up to 460 V.

2) Relief valves available for limiting differential pressure.

3) Measuring surface sound pressure level acc. to EN ISO 3744, measured with an equivalent unit at a distance of 1 m. The pump is throttled to an average suction pressure, with piping connected, but no relief valves fitted, tolerance ±3 dB (A).

All G-BH fulfil the 2006/42/EC (machinery) and 2006/95/EC (low voltage) directives and the EN 60034-1 norm "Rotating electrical machines".

The motors comply with EN 60 034-1 / -2 / -30 (IEC 60034) and thermal class F.

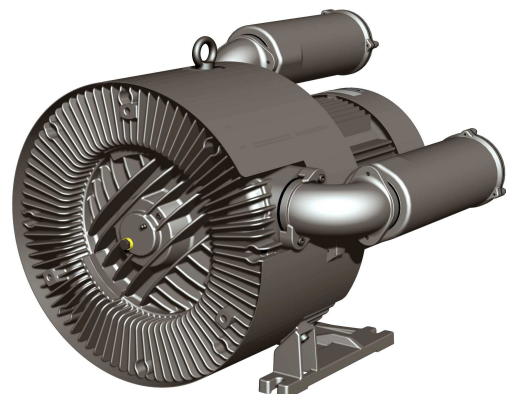
The voltage tolerance is +/- 5%.

The frequency tolerance is +/- 2 % maximum.

Other voltages

50 Hz	50 Hz voltage range	60 Hz voltage range	87 Hz (5000 rpm)	2BH1...-7.	<input type="checkbox"/>	<input type="checkbox"/>	<input type="checkbox"/>
IE2 3~	3~						
200 V Δ / 345 V Y	180 - 240 V Δ / 310 - 415 V Y	200 - 275 V Δ / 345 - 480 V Y	----		P		1
500 V Δ	450 - 500 V Δ	520 - 600 V Δ			P		5
230 V Δ / 400 V Y	200 - 260 V Δ / 350 - 450 V Y	230 - 290 V Δ / 400 - 500 V Y	400 V Δ		P		6
400 V Δ / 690 V Y	350 - 450 V Δ / 610 - 715 V Y	400 - 500 V Δ / 690 - 725 V Y	----		P		7
IE2 3~	3~ ⁵⁾						
----	185 - 225 V Δ / 320 - 390 V Y	200 - 240 V Δ / 345 - 415 V Y	----		H		1
----	200 - 240 V Δ / 345 - 415 V Y	220 - 275 V Δ / 380 - 480 V Y	380 V Δ		H		6
----	345 - 415 V Δ	380 - 480 V Δ	----		H		7
----	500 V Δ	575 V Δ	----		C		5

5) Performance can differ if standard motors are used. Please refer to corresponding data sheets.



Changes in particular of the quoted performance curve, data and weights may occur without prior notice. The data given do not constitute an obligation from our side to deliver as shown.

Gardner Denver

*Elmo Rietschle is a brand of Gardner
Denver's Industrial Products Group
and part of Blower Operations*

er.de@gardnerdenver.com
www.gd-elmorietschle.com

Gardner Denver Deutschland GmbH

Industriestraße 26
97616 Bad Neustadt - Germany

Tel.: +49 9771 6888-0
Fax: +49 9771 6888-4000

Gardner Denver Schopfheim GmbH

Roggenbachstraße 58
79650 Schopfheim - Germany

Tel.: +49 7622 392-0
Fax: +49 7622 392-300